

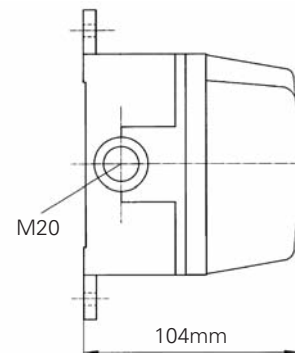
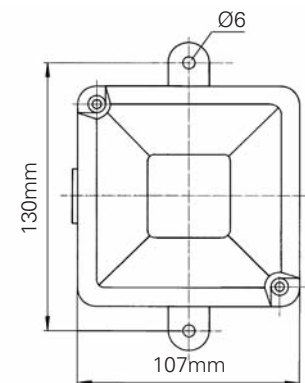
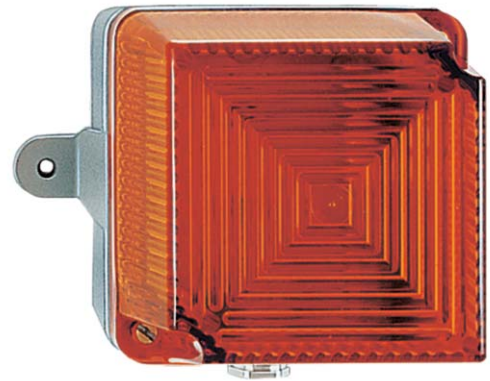
# BLK LED

The BLK LED is a durable signalling beacon with a tough seawater proof aluminium base and polycarbonate lens optimised for wall mounting. The range of six operating modes ensures that a distinct visual signal can be chosen for any application where ambient noise would reduce the effectiveness of audible alarms.



## Technical Specification

Voltage	24Vdc 230Vac
Current	160mA @ 24Vdc 12mA @ 230Vac
Flash rate	Steady flashing blinking (5 Settings)
Flash colour	Red, amber, green, blue
Temperature	-30°C to +50°C
Protection	IP65
Construction	Lens - polycarbonate base - seawater proof coated aluminium
Weight	0.7Kg
Colours	Base - light grey



### Features

- 5 modes
- LED light source
- IP65 protection
- Salt water resistant aluminium and polycarbonate housing

### Benefits

- Provides distinct signals to differentiate between alarm conditions
- Long life, low maintenance light source
- Suitable for internal or external use
- Suitable for use in the harshest of environments

### Reference

BLK/L/RL/24VDC  
BLK/L/AL/24VDC  
BLK/L/RL/230VAC  
BLK/L/AL/230VAC

### Catalogue No.

22161302  
22161303  
22160702  
22160703

### Description

LED-Signal Light BLK LED, 24Vdc, Red  
LED-Signal Light BLK LED, 24Vdc, Amber  
LED-Signal Light BLK LED, 230Vac, Red  
LED-Signal Light BLK LED, 230Vac, Amber