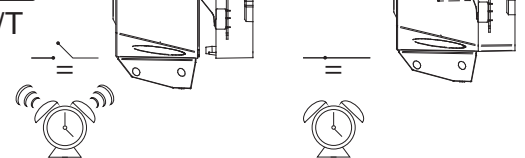
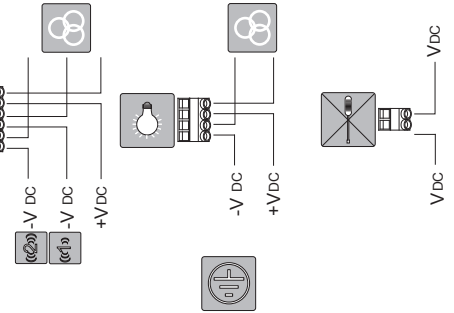
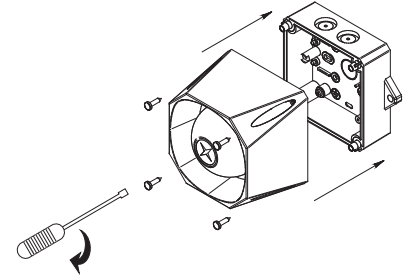
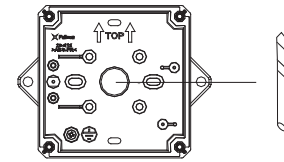
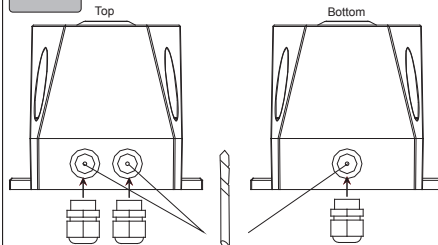
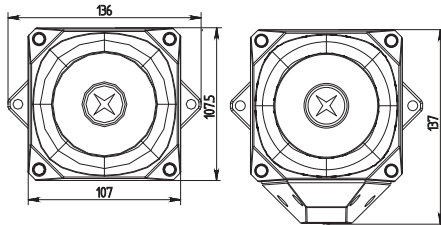
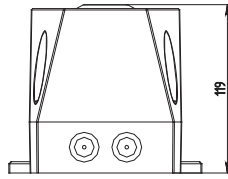
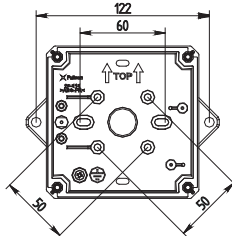
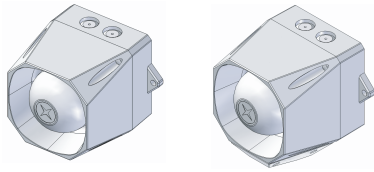


# asserta mini



EN54-3		EN54-3	
Sounder		Sounder/Beacon	
18 ~ 28V	9 ~ 60V	18 ~ 28V	9 ~ 60V
6 ~ 33mA		118 ~ 224mA	
0.28mm <sup>2</sup> ~ 2.5mm <sup>2</sup>		0.28mm <sup>2</sup> ~ 2.5mm <sup>2</sup>	
-25°C ~ +70°C		-25°C ~ +70°C	
ABS V0		ABS V0	
Type B = IP66		Type B = IP66	
32		32	
-		1Hz	

Product exceeds minimum requirements of EN54-3  
See [www.fulleon.com](http://www.fulleon.com)  
Le produit dépasse les exigences minimum de EN54-3  
Voir [www.fulleon.com](http://www.fulleon.com)  
Das Erzeugnis erfüllt die Mindestanforderungen von EN54-3.  
Siehe [www.fulleon.com](http://www.fulleon.com)  
Il prodotto supera i requisiti minimi previsti dalla norma EN54-3  
Vedi [www.fulleon.com](http://www.fulleon.com)  
Product overtreft de minimale vereisten van EN54-3.  
Zie [www.fulleon.com](http://www.fulleon.com)  
El producto excede los requisitos mínimos de la norma EN54-3  
Véase [www.fulleon.com](http://www.fulleon.com)  
Produkten överträffar minsta krav enligt EN54-3  
Se [www.fulleon.com](http://www.fulleon.com)

Code	SPL (dB)	FID (dB)	Waveform	Frequency	Pulse	Tone	@20°C				
							mA	dB(A)	mA	dB(A)	
1	14	11111		800 & 970Hz	2Hz (250ms~250ms)	BS Fire Tone	13	100	197	102	*
2	14	11110		800 & 970Hz	7Hz (7/s)	BS Fire Tone	13	103	198	103	*
3	14	11101		800 & 970Hz	1Hz (1/s)	BS Fire Tone	13	105	198	105	*
4	14	11100		2850Hz	Steady		28	104	223	107	*
5	4	11011		2400 ~ 2850Hz	7Hz		32	111	224	111	*
6	4	11010		2400 ~ 2850Hz	1Hz		33	112	223	113	*
7	14	11001		300 ~ 1200Hz	3s Sweep, 0.5s silence, then repeat	Dutch Fire Tone	11	106	197	106	*
8	14	11000		1200 ~ 500Hz	1Hz	DIN Tone	15	105	118	107	*
9	4	10111		2400 & 2850Hz	2Hz (250ms~250ms)		30	109	220	108	*
10	14	10110		970Hz	0.5Hz (1s On / 1s Off)		9	102	195	103	*
11	14	10101		800 & 970Hz	1Hz (500ms~500ms)	BS Fire Tone	13	102	195	103	*
12	4	10100		2850Hz	0.5Hz (1s On / 1s Off)		13	105	200	107	*
13	14	10011		970Hz	0.8Hz (250ms On / 1s Off)		6	102	188	102	*
14	14	10010		970Hz	Steady	BS Fire Tone	14	102	198	103	*
15	14	10001		554 & 440Hz	100ms ~ 400ms	French Fire Tone	17	105	200	105	*
16	16	10000		660Hz	3.3Hz (150ms On / 150ms Off)	Swedish Fire Tone	8	101	195	101	*
17	17	01111		660Hz	0.28Hz (1.8s On / 1.8s Off)	Swedish Fire Tone	7	102	200	102	*
18	18	01110		660Hz	0.05Hz (13s On / 6.5Hz On)	Swedish Fire Tone	6	102	189	102	*
19	19	01101		660Hz	Steady	Swedish Fire Tone	12	102	198	102	*
20	20	01100		554 & 440Hz	0.5Hz (1s On / 1s Off)	Swedish Fire Tone	15	105	200	105	*
21	21	01011		660Hz	1Hz (500ms ~ 500ms)	Swedish Fire Tone	8	102	193	102	*
22	14	01010		2850Hz	4Hz (150ms On / 100ms Off)	Pelican Crossing	19	104	210	106	*
23	14	01001		800 ~ 970Hz	50Hz	BS Fire Tone	13	103	197	103	*
24	4	01000		2400 ~ 2850Hz	50Hz		32	110	202	110	*
25	25	00111		970Hz	3 x 500ms pulses followed by 1.5s silence then repeat	ISO 8201	7	102	194	103	*
26	26	00110		970 & 800Hz	3 x 500ms pulsed sweep followed by 1.5s silence	ISO 8201	7	104	196	104	*
27	27	00101		4000Hz	3 x 500ms pulsed two tone followed by 1.5s silence		7	102	190	103	*
28	10	00100		800 & 970Hz	2Hz (250ms ~ 250ms)	BS Fire Tone	13	102	200	103	*
29	988Hz	00011		990 & 650Hz	2Hz (250ms ~ 250ms) (Symphoni Tones)	BS Fire Tone	21	105	210	105	*
30	510Hz	00010		510 & 610Hz	2Hz (250ms ~ 250ms) (Squashni Micro Tones)	BS Fire Tone	17	104	202	104	*
31	31	00001		300 ~ 1200Hz	1Hz		21	107	211	106	*
32	32	00000		510 & 610Hz	1Hz (500ms ~ 500ms)		17	105	205	105	*